

# VITRO **S1**



## ATTENTION TO DETAIL

Vitro S1 is an automatic hot beverage machine designed with the highest quality materials and components found in our top performance professional machines.




Its seamless and compact design fits nicely in any coffee area in a small office, a hotel, a convenience store or a quick service restaurant. Designed to provide the ultimate coffee experience from the first cup to the last.

### VITRO S1 ESPRESSO

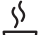



The Vitro S1 Espresso is a compact coffee machine designed to provide the highest quality of espresso-based drinks into any location that consumes up to 60 cups/days.



#### Machine Capacity

- 150 cups Espresso. 
- 150 cups Cappuccino. 
- 40 cups Hot chocolate. 

#### Productivity per hour

- Hot water 348.43 oz 
- Espresso 90 cups. 
- Soluble drink 90 cups. 
- Cappuccino 70 cups. 



Espresso



Solubles



Hot Water



Removable Tray



2 cup holder positions



Water tank

#### Easy to refill coffee beans and soluble ingredients

The filling process can be done from the top, without opening the door, in a straightforward and simple way.



#### Easy to clean and maintain

Front removal of liquid waste tray, with no need to open the machine.

#### Easy to refill the water tank

Thanks to its ergonomic design, the 135 oz water tank can be removed and replaced with little effort. Mains water connection kit available for longer run time.





## ACCESSORIES TO SUIT YOUR BUSINESS MODEL

Designed to suit different operational business models by offering a myriad of functioning modes and accessories.

Vitro S1 supports a cooperative culture in the office, offering high quality coffee, a premium user experience, and a comprehensive hot drinks offer.

It is also the perfect solution for a coffee service in convenience stores as well as for hotels, where breakfast needs to be good but also fast. It offers a pleasurable experience with an attractive, simple and functional design.



**Base cabinet kit**  
Ready to install a coin validator.



**Cup module kit**  
For dispensing cups.



**Validator module kit**  
Ready to install a coin validator.

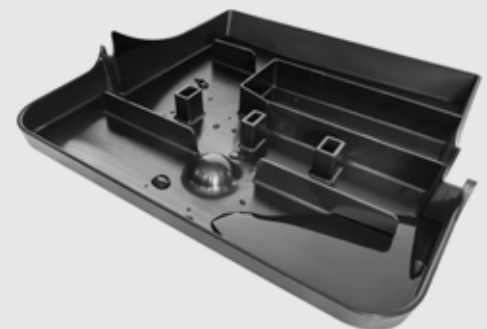


**RFID Reader Kit**  
For product recharge card or cashless systems



### Easy to clean the liquids tray

The liquids tray has a capacity of 40.5 oz. The design has a built-in wave breaker to avoid unwanted splashes and spills during transport for cleaning.



### Easy to empty and clean the waste tray

The coffee waste drawer has a capacity of up to 60 coffees. Its design allows for easy emptying and dishwasher cleaning.



### Easy label changing

The machine allows easy label replacement to adapt the panel to the tastes of your customers.

## A LIFETIME RELATION WITH COFFEE

Make the most of Azkoyen's over 30 years experience in technological innovations for the preparation of hot beverages in hotel, catering and vending environments. Taking great care with every detail of the process in order to provide the definitive experience in the world of coffee.



### SPECIFICATIONS:

		VITRO S1 ESPRESSO
CAPACITY	Water tank capacity (oz)	135 oz
	No. of coffee bean hoppers	1
	No. of soluble product canisters	2
	Product capacity (oz)	Coffee beans 42.33 oz / 2.6 lbs Powdered Milk 21.6 oz / 1.3 lbs Chocolate 28.2 oz / 1.8 lbs
TECHNICAL INFORMATION	Weight	60.63 lbs
	Brewing systems	Espresso
	Name of the brewing system	AzkV10
	Brewing system capacity	0.18-0.28 oz
	No. of mixers	1
	Name of grinder	M03 Horeca Performance
	No. of grinders	1
	Boiler type	Pressure
	Boiler capacity	10.65 oz
	Display Selection Type	Direct Touch Keypad
	No of selections	8
	Voltage / Current:	110 V - 120 V / 12.5 A - 13.6 A
	Maximum Power	1500 W
	Width	
Height		
Depth		

**España**  
Avda. San Silvestre, s/n  
31350 Peralta (Navarra)  
Tel.: 948 709 709  
www.azkoyenvending.es

**U.K.**  
Unit 1, Interplex 16,  
Ash Ridge Road  
Bradley Stoke, Bristol,  
BS32 4QE, England  
Tel.: 01275 844 471  
www.coffetek.co.uk

**Deutschland**  
Am Turm 86  
53721 Siegburg  
Tel.: 02241-595 70  
www.azkoyenvending.de

**France**  
6 Allée de Londres  
Le Madras Bat C2  
91140 Villejust  
Tel.: 01 69 75 42 10  
www.azkoyenvending.fr

**Portugal**  
Bela Vista Office  
Estrada de Paço  
de Arcos, 66  
2735-336 Cacem  
Tel.: 1210 985 212

**Colombia**  
Via la Virginia, Corregimiento  
Caimalito. Bodega B-16.  
Zona Franca Internacional  
de Pereira  
Tel.: +57 6 31 105 13  
www.azkoyenandina.com

**United States**  
3809 Beam road, Suite H  
Charlotte, North Carolina  
28217  
Tel.: +1 (980) 237-5065  
www.azkoyenvending.com